

FACTSHEET

Waste Wise Cities Tool in Bahir Dar, Ethiopia



The absence of up-to-date data on waste generation, composition and waste value chain has been a challenge in solid waste management activities of Bahir Dar City. Additionally, there was no disaggregated data on plastic waste management.

In this regard, the current waste assessment conducted by UN-Habitat by applying WaCT will fill the gap with up-to-date solid waste management data. This inturn will enable Bahir Dar City to plan sound waste management activities, and this helps to provide effective and efficient waste management service to the residents of our city.

Furthermore, implementing recommendations of the assessment report will help the city solve environmental pollution from mismanaged solid waste.

Dr. Dires Sahilu
Deputy Mayor of Bahir Dar City



City: **Bahir Dar**
Country: **Ethiopia**

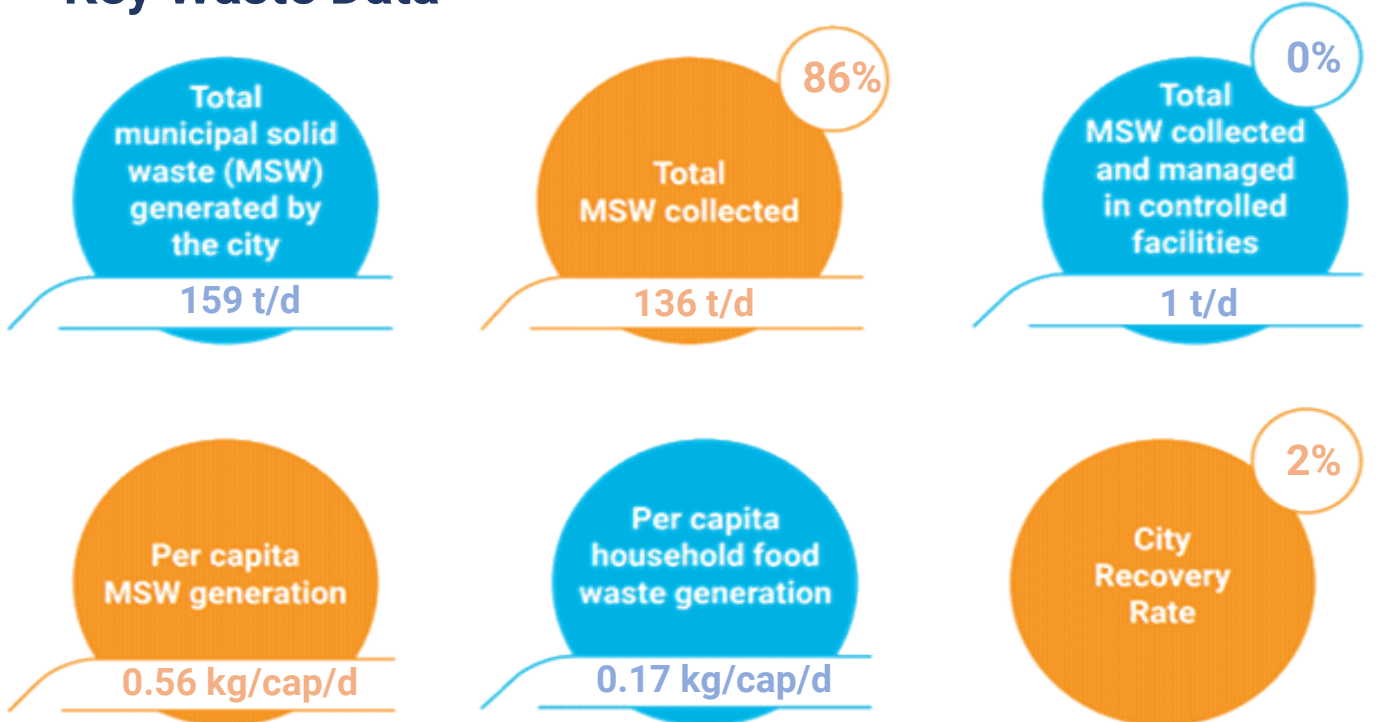


Population: **284,432 (2020)**



Year of WaCT Survey: **2021**

Key Waste Data



Household and non-household waste generation



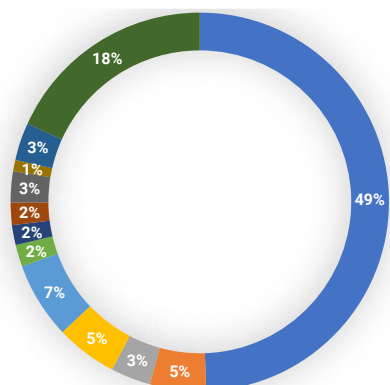
	Average household waste generation (kg/capita/day)	Total population	Total MSW generated by households (t/day)
High income	0.42	113,488	48
Middle income	0.39	54,896	21
Low income	0.36	116,048	42
TOTAL	0.39	284,432	111



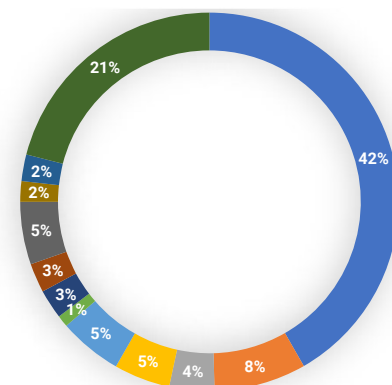
Total MSW generated from non-household sources (t/day): **48**
 calculated using proxy of 30 % of total MSW

Composition of waste at the households and at the disposal site

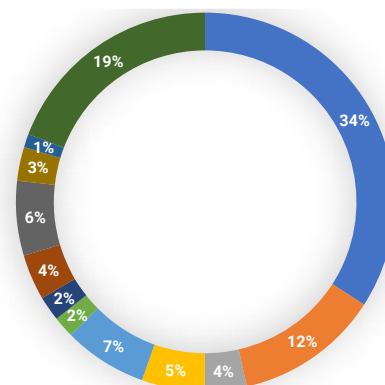
Household waste composition
higher income areas



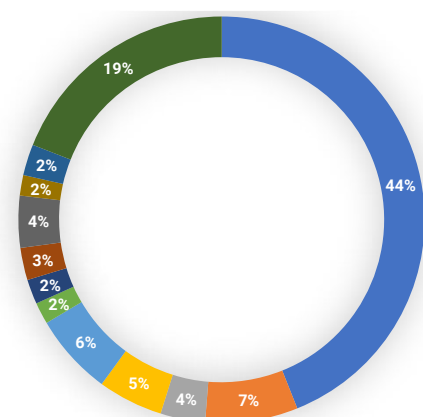
Household waste composition
middle income areas



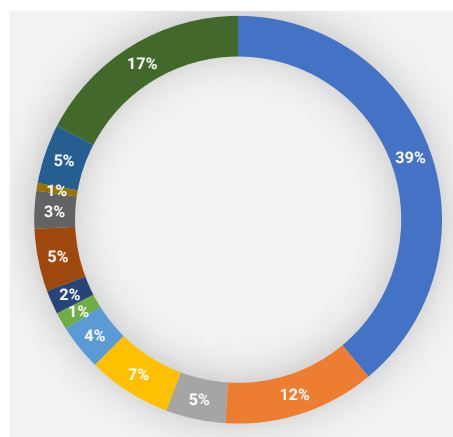
Household waste composition
lower income areas



Average household waste composition



Waste composition at disposal site



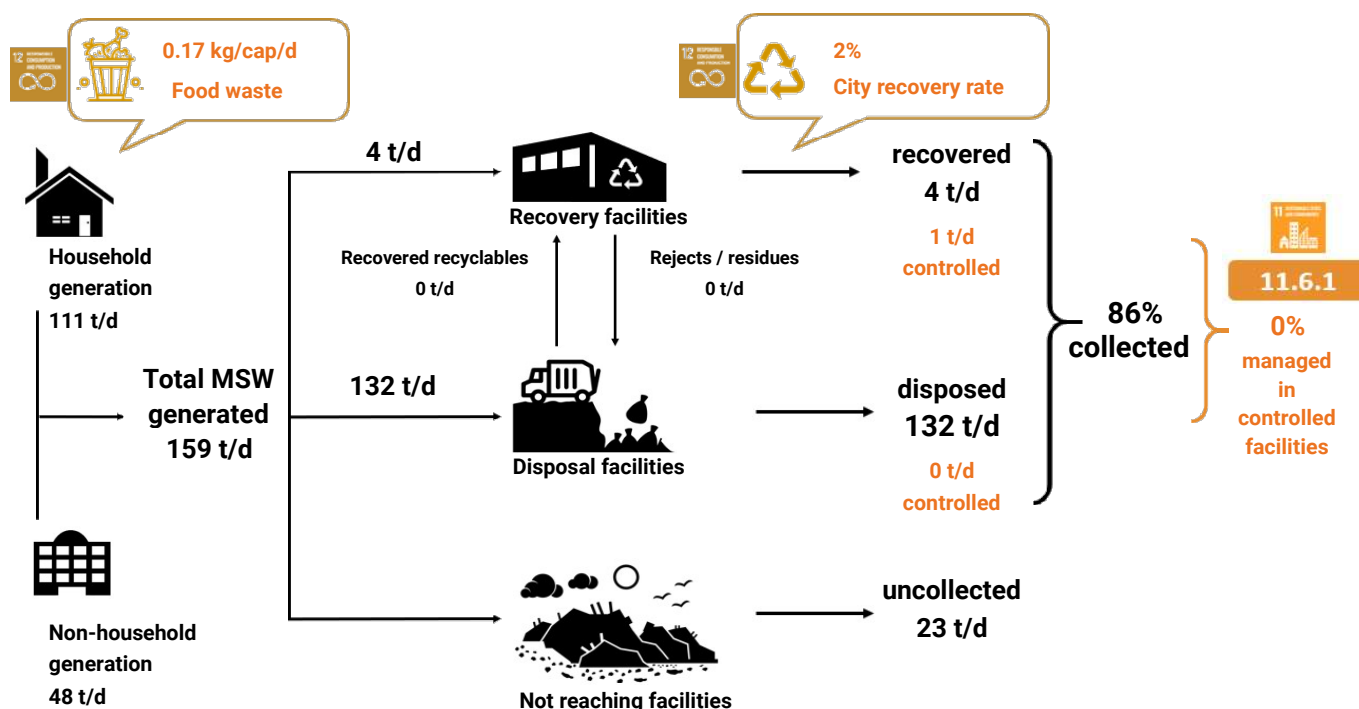
- Kitchen / canteen
- Garden / park
- Paper / cardboard
- Plastic film
- Plastics dense
- Metals
- Glass
- Textiles / shoes
- Wood (processed)
- Special wastes
- Composite products
- Other

Potential recyclables from households



Types	Recyclable waste generation from households (t/day)
Food waste	49
Plastic film	6
Plastic dense	7
Paper and cardboard	4
Glass	2
Metal	2
Total	70

WaCT Flow Chart



For more info and if interested in WaCT application contact the Waste Wise Cities Team at WasteWiseCities@un.org